

# Model 475

## Voltage Transformer

### Application

60 Hz.

### Standard Secondary Voltage

120 Volts.

### Insulation Level

600 Volt, 10 kV BIL full wave.

### Accuracy Class:

0.3 W, 0.6 X, 1.2 M at 60 Hz.

### Thermal Rating:

300 VA at 30 °C. amb.,  
200 VA at 55 °C. amb.

The primary and secondary terminals are No. 8 brass screws with flatwasher and a lockwasher.

Approximate weight 12.5 lbs.



Clear Plastic Cover

REGULATORY AGENCY APPROVALS



E93779



LR89403

Manufactured to meet the requirements of ANSI/IEEE C57.13.  
Classified by U.L. in accordance with IEC 44-1

## Model 475

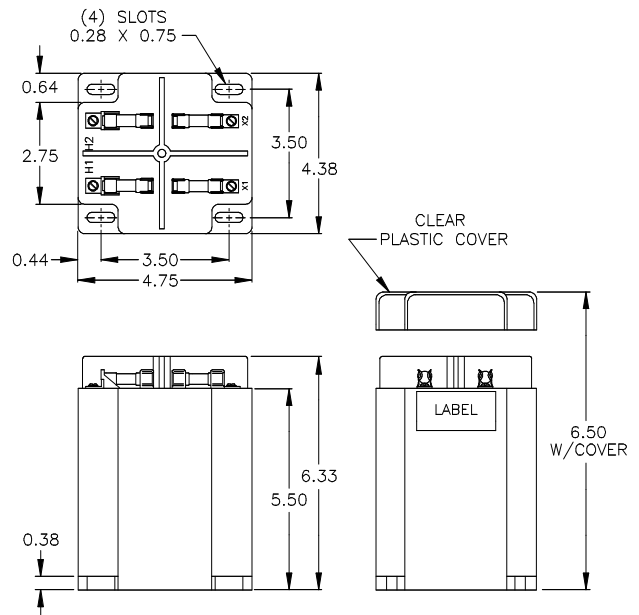
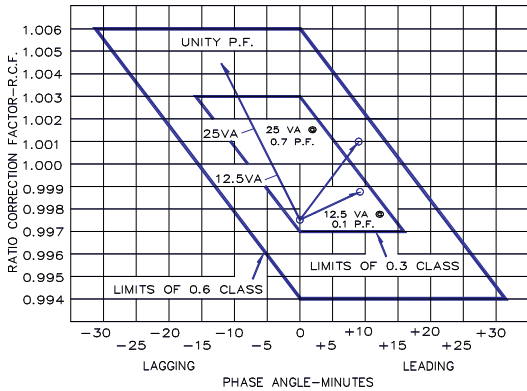
Not fused	Catalog Number		Voltage Rating	Turns Rating	Rec. Primary Fuse rating
	Primary Fuses Only	Primary and Secondary Fuses			
475-069	475-069F	475-069FF	69.3:120	0.58:1	10.0
475-120	475-120F	475-120FF	120:120	1:1	6.0
475-208	475-208F	475-208FF	208:120	1.73:1	4.0
475-240	475-240F	475-240FF	240:120	2:1	4.0
475-277	475-277F	475-277FF	277:120	2.31:1	4.0
475-288	475-288F	475-288FF	288:120	2.4:1	3.0
475-300	475-300F	475-300FF	300:120	2.5:1	3.0
475-346	475-346F	475-346FF	346:120	2.88:1	3.0
*475-480	*475-480F	*475-480FF	*480:120	4:1	2.0
*475-600	*475-600F	*475-600FF	*600:120	5:1	1.5



## Model 475

- The core and coil assembly is encased in a thermoplastic shell and filled with resin.
- These transformers are designed for operation line-to-line. They may also be operated line-to-ground or line-to-neutral at reduced voltage, (58 % of rated volts).
- It is desirable to use a 3.0 amp BBS type or equal fuse in the secondary to protect the transformer.
- With two exceptions these transformer are ANSI C57.13 group 1. Those marked \* are group 2.
- Models designed specifically for 50 Hz operation are available with reduced performance. Consult factory for details.
- This page contains a circle diagram for the estimation of the errors for other than rated burdens. See page 27 in this section for a description of its use.
- Transformer has a clear plastic cover

VOLTAGE TRANSFORMER CIRCLE DIAGRAM  
THIS GRAPH IS DRAWN FOR A 60Hz 0.6 P.F. SYSTEM LOAD



### GEGridSolutions.com

Grid-AIS-L4-ITL\_Model\_475-1422-2017\_05-EN. General Electric Company and Instrument Transformers LLC reserve the right to change specifications of described products at any time without notice and without obligation to notify any person of such changes.

### Worldwide Contact Center

Web: [www.GEGridSolutions.com/contact](http://www.GEGridSolutions.com/contact)

Phone: +44 (0) 1785 250 070

USA and Canada: +1 (0) 800 547 8629

Europe, Middle East and Africa: +34 (0) 94 485 88 00

