

GE

Energy Connections

Model 3P669

Current Transformer
Window Size 2.87" x 6.30"

Application

3 phase metering.

Frequency

50-400 Hz.

Insulation Level

600 Volts, 10 kV BIL full wave.

Terminals are brass studs No. 8-32 with one flatwasher and regular nut.

Approximate weight 5.5 lbs.

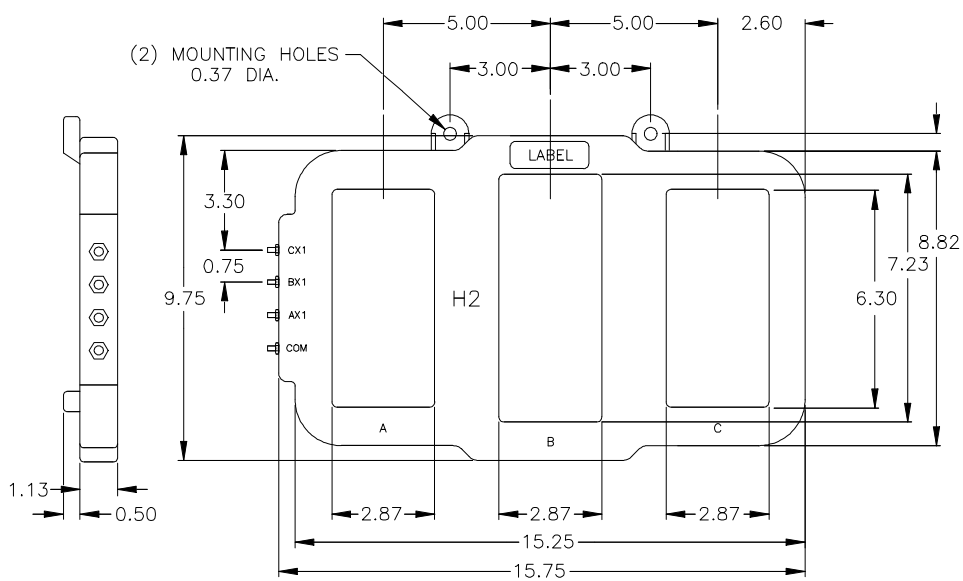
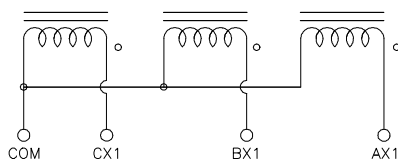
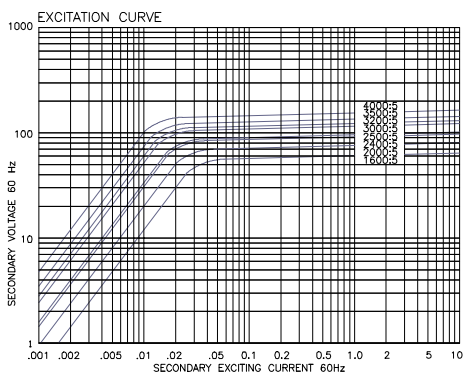


Data Table: Model 3P669

Catalog Number	Current Ratio	ANSI Metering Class at 60 Hz					Secondary Winding Resistance (Ω @ 75°C)
		BO.1	BO.2	BO.5	BO.9	B1.8	
3P669-162	1600:5	0.3	0.3	0.6	1.2	2.4	0.499
3P669-202	2000:5	0.3	0.3	0.3	0.6	1.2	0.624
3P669-242	2400:5	0.3	0.3	0.3	0.6	1.2	0.749
3P669-252	2500:5	0.3	0.3	0.3	0.6	1.2	0.780
3P669-302	3000:5	0.3	0.3	0.3	0.6	0.6	0.936
3P669-322	3200:5	0.3	0.3	0.3	0.3	0.6	1.251
3P669-352	3500:5	0.3	0.3	0.3	0.3	0.6	1.368
3P669-402	4000:5	0.3	0.3	0.3	0.3	0.6	1.952



Model 3P669



GEGridSolutions.com

Grid-AIS-L4-ITL_Model_3P669-1201-2017_05-EN. © Copyright 2017. General Electric Company and Instrument Transformers LLC reserve the right to change specifications of described products at any time without notice and without obligation to notify any person of such changes.

Worldwide Contact Center

Web: www.GEGridSolutions.com/contact
 Phone: +44 (0) 1785 250 070
 USA and Canada: +1 (0) 800 547 8629
 Europe, Middle East and Africa: +34 (0) 94 485 88 00

