

GE
Energy Connections

Model 3P10

Current Transformer
Window Size 1.58" x 0.26"

Application

3 phase relaying and motor overload protection

Frequency

50-400 Hz.

Insulation Level

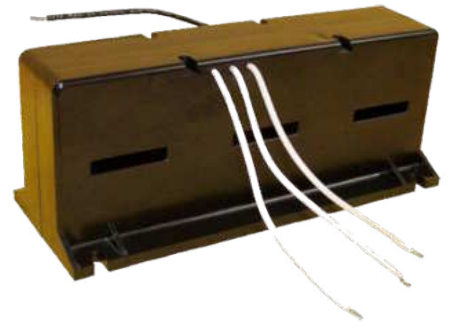
600 Volts, 10 kV BIL full wave.

Continuous Thermal Current Rating Factor:

1.0 at 30°C ambient.
0.75 at 55°C ambient.

Secondary leads are UL 1015, 105°C., CSA approved, No. 16 AWG, 24" long.

Approximate weight 4 lbs



REGULATORY AGENCY APPROVALS



Manufactured to meet the requirements of ANSI/IEEE C57.13.
Classified by U.L. in accordance with IEC 44-1

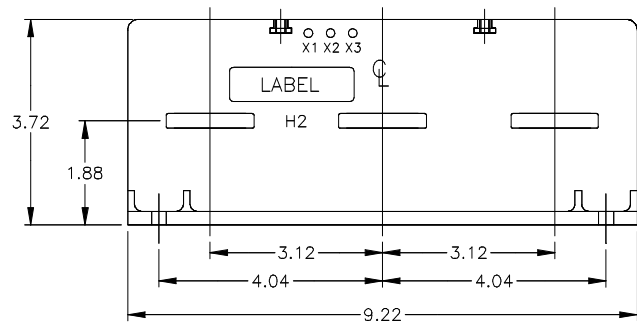
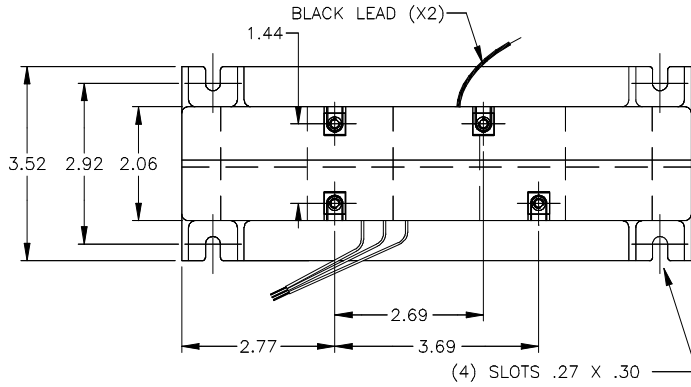
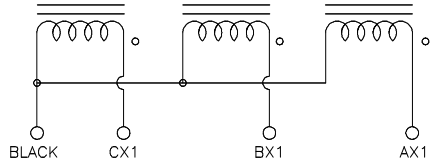
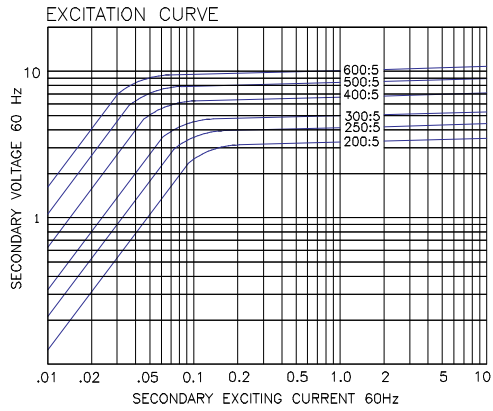
Data Table Model 3P10

Catalog Number	Current Ratio	VA for ± 1% Class	Secondary Winding Resistance (Ω @ 75 °C)
3P10-201	200:5	7.5	0.056
3P10-251	250:5	10.0	0.071
3P10-301	300:5	12.5	0.089
3P10-401	400:5	15.0	0.113
3P10-501	500:5	20.0	0.186
3P10-601	600:5	25.0	0.223

Note: Captive slots on top of transformer case can be used for attaching auxiliary device mounting plate, (not supplied). Originally designed for use with molded case circuit breakers and motor starters with 3.12" bus center lines. Can be mounted directly on bus bar and held in place with roll pins inserted in bus.



Model 3P10



GEGridSolutions.com

Grid-AIS-L4-ITL_Model_3P10-1531-2017_05-EN. © Copyright 2017. General Electric Company and Instrument Transformers LLC reserve the right to change specifications of described products at any time without notice and without obligation to notify any person of such changes.

Worldwide Contact Center

Web: www.GEGridSolutions.com/contact

Phone: +44 (0) 1785 250 070

USA and Canada: +1 (0) 800 547 8629

Europe, Middle East and Africa: +34 (0) 94 485 88 00

