



Current Transformer

Model 781MR

APPLICATION:

Relaying and metering

FREQUENCY:

50-400 Hz.

INSULATION LEVEL:

600 Volts. 10 kV BIL. full wave

WINDOW DIAMETER:

6.5"

APPROXIMATE WEIGHT:

31 lbs.

CONTINUOUS THERMAL CURRENT RATING FACTOR:

2.0 at 30°c amb., 1.5 at 55°c amb

CONNECTIONS:

-Secondary terminals are No. 10-32 brass screws with one flat washer, lockwasher, and regular nut



Model	781MR
Window Size	6.50
Width	9.88
Height	9.88
Depth	3.38

CERTIFICATIONS:



E257877

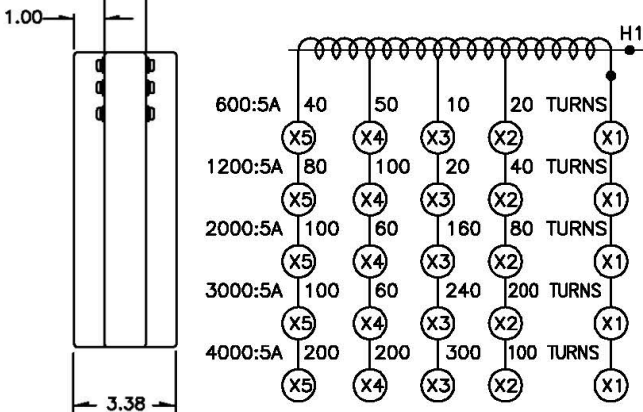
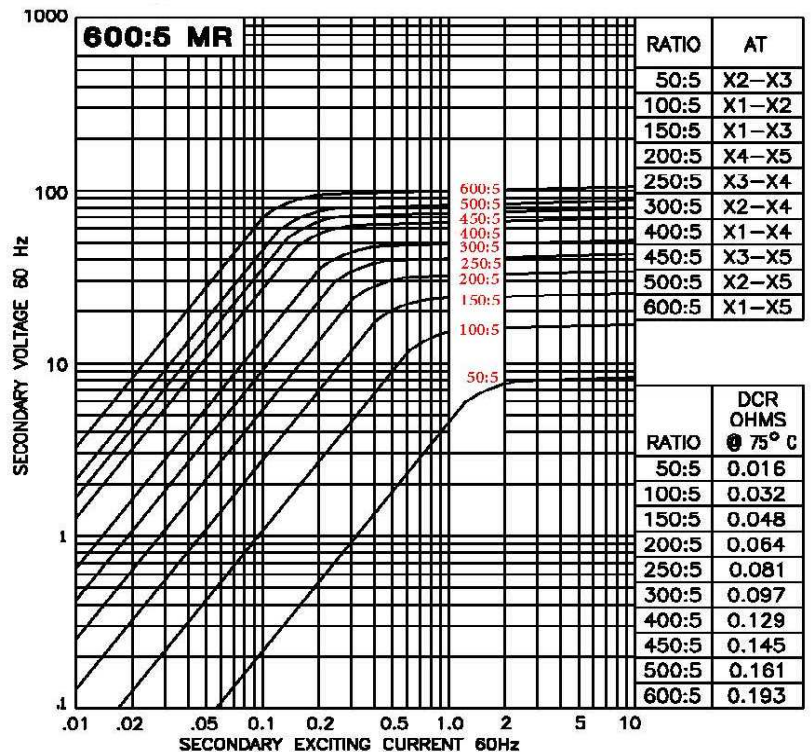
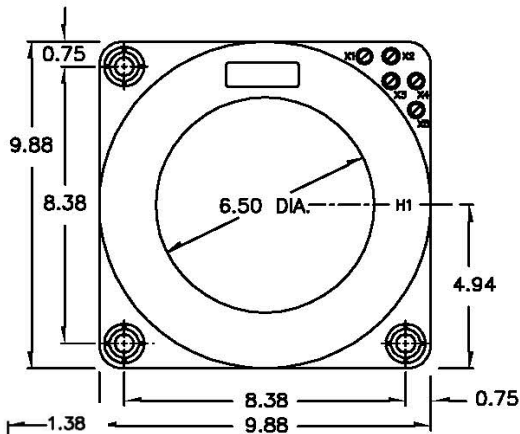


237637

MODEL 781MR
Window Diameter 6.5"
Approximate weight: 31 lbs.

Catalog Number	Relay Class	ANSI Metering Class at 60Hz	Continuous Thermal	
			@ 30°C	@ 50°C
781-601MR	C100	0.3 B0.5	2.0	1.5
781-122MR	C200	0.3 B1.8	2.0	1.5
781-202MR	C200	0.3 B1.8	2.0	1.5
781-302MR	C200	0.3 B1.8	1.33	1.33
781-402MR	C200	0.3 B1.8	1.33	0.8

EXCITATION CURVE



MODEL 781 - 601MR - rating C100

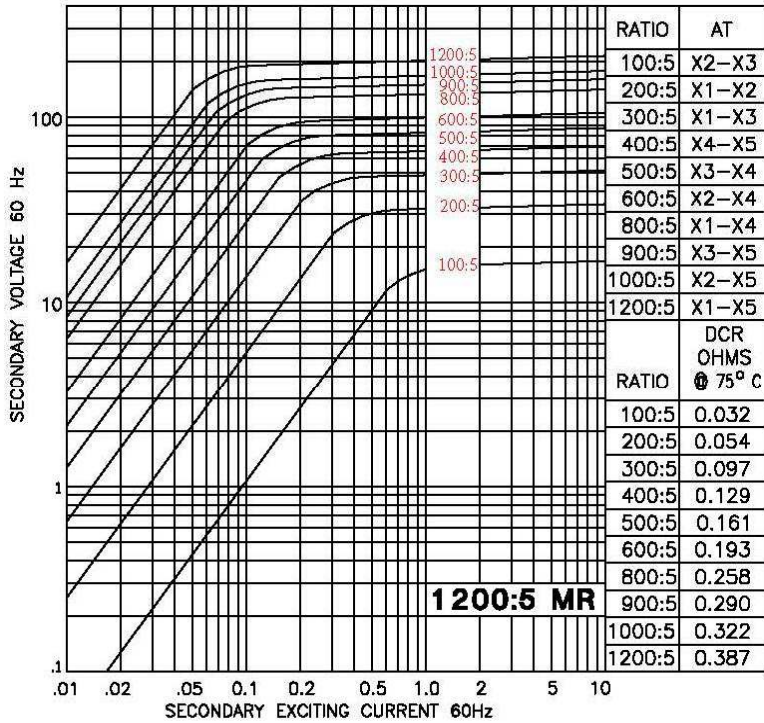
Products are manufactured in a plant whose quality management system is certified / registered as being in conformity with ISO 9001



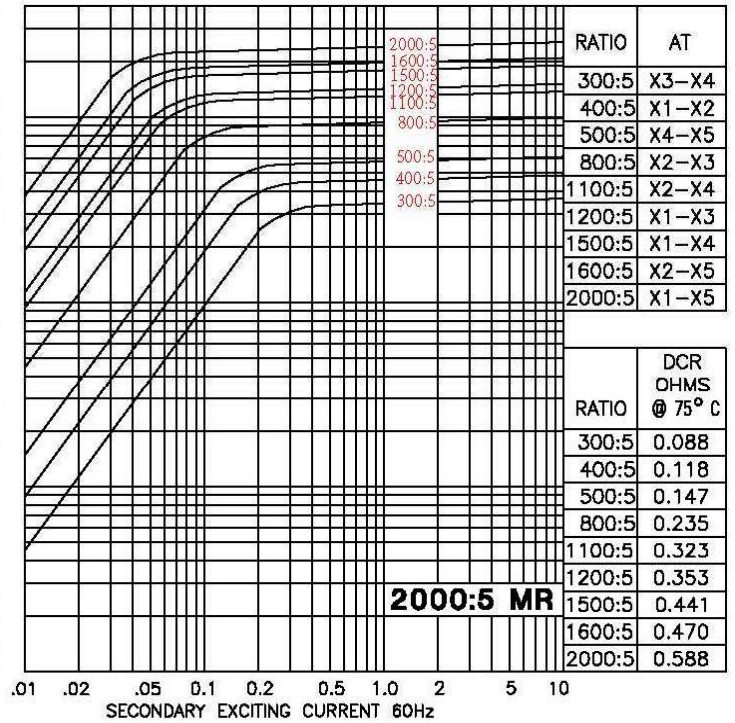
Current Transformer

Model 781MR

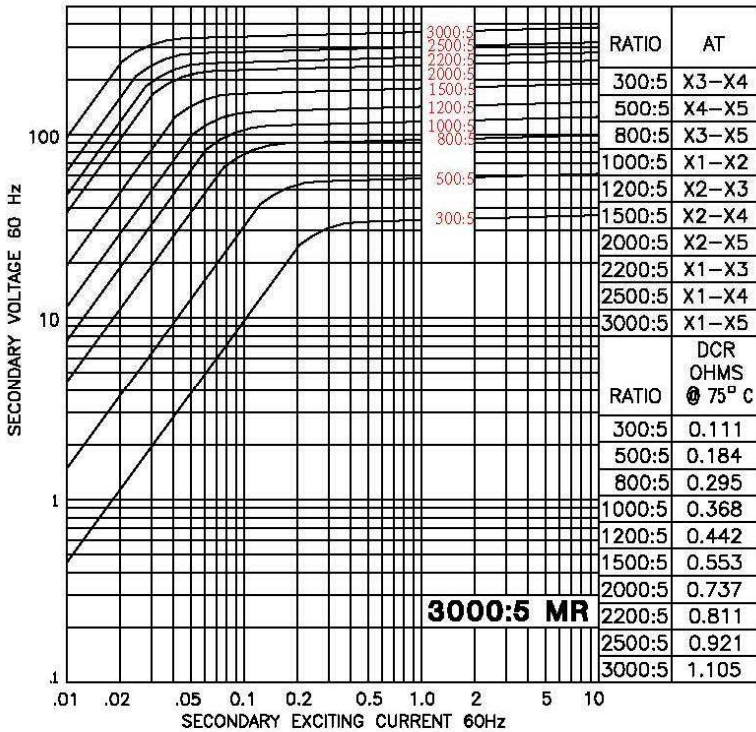
EXCITATION CURVES



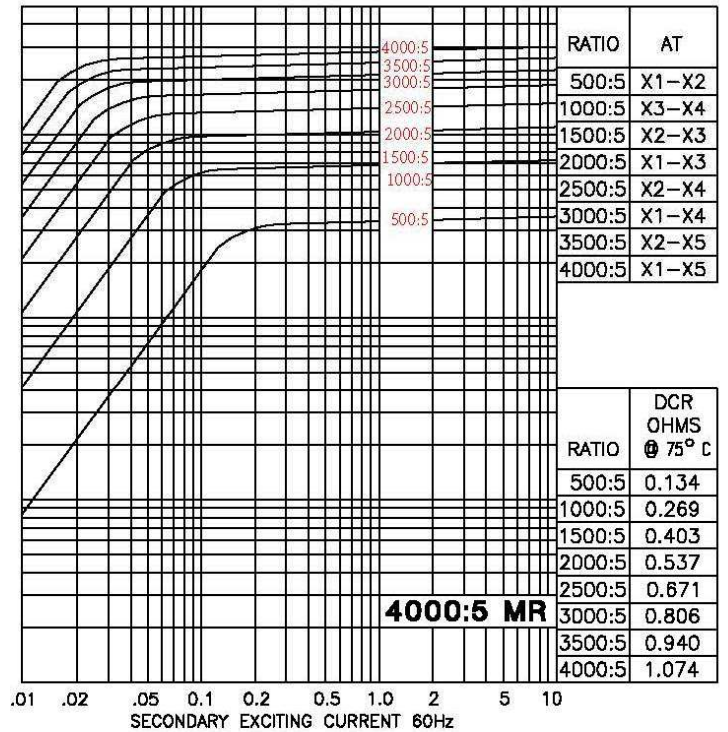
MODEL 781 - 122MR - rating C200



MODEL 781 - 202MR - rating C200



MODEL 781 - 302MR - rating C200



MODEL 781 - 402MR - rating C200